

Placement Procedures

Approved & Updated April 2021

OVERVIEW

NNMC strives to place first year students in the appropriate level Math and English classes based on preparation and skill level to ensure success in college level courses.

The College utilizes a multiple measure approach and considers the following factors in determining placement:

Achievement in previous coursework through the examination of transcripts and consideration of GPA;

Test scores when available, including Accuplacer, ACT, SAT, HiSET, or other approved exams;

When necessary, performance on placement instruments developed by the NNMC Math and English departments.

First-Year Advisors: The First-Year Advisors will determine placement based on criteria set by the Math and English Academic Departments. If you elect to appeal the placement, you will be referred to the chair of the appropriate department for consultation and potentially additional assessment. The full criteria and Test Score Charts are published on the Advisement Center web page.

Transfer students: NNMC will use your previous college transcripts to determine placement when equivalent courses are indicated.

Test scores can be used for placement if the test was taken within the last 3 years.

Re-testing: If you are not satisfied with your Accuplacer scores, you may re-test, but you will need to wait a minimum of one day and will be charged \$12.00 to re-take the exam.

Figure 1 General Procedures for Placement

Placement is typically based on one of the following processes. However, when more than one measure is available, the advisor will base placement on the process that indicates the highest placement or course.

Determine highest course using Transcripts Flowchart.

Determine highest course using Exam Scores Flowchart.

Re-evaluate placement through in-house assessment.

Figure 2 Math Placement Flowchart using Transcripts

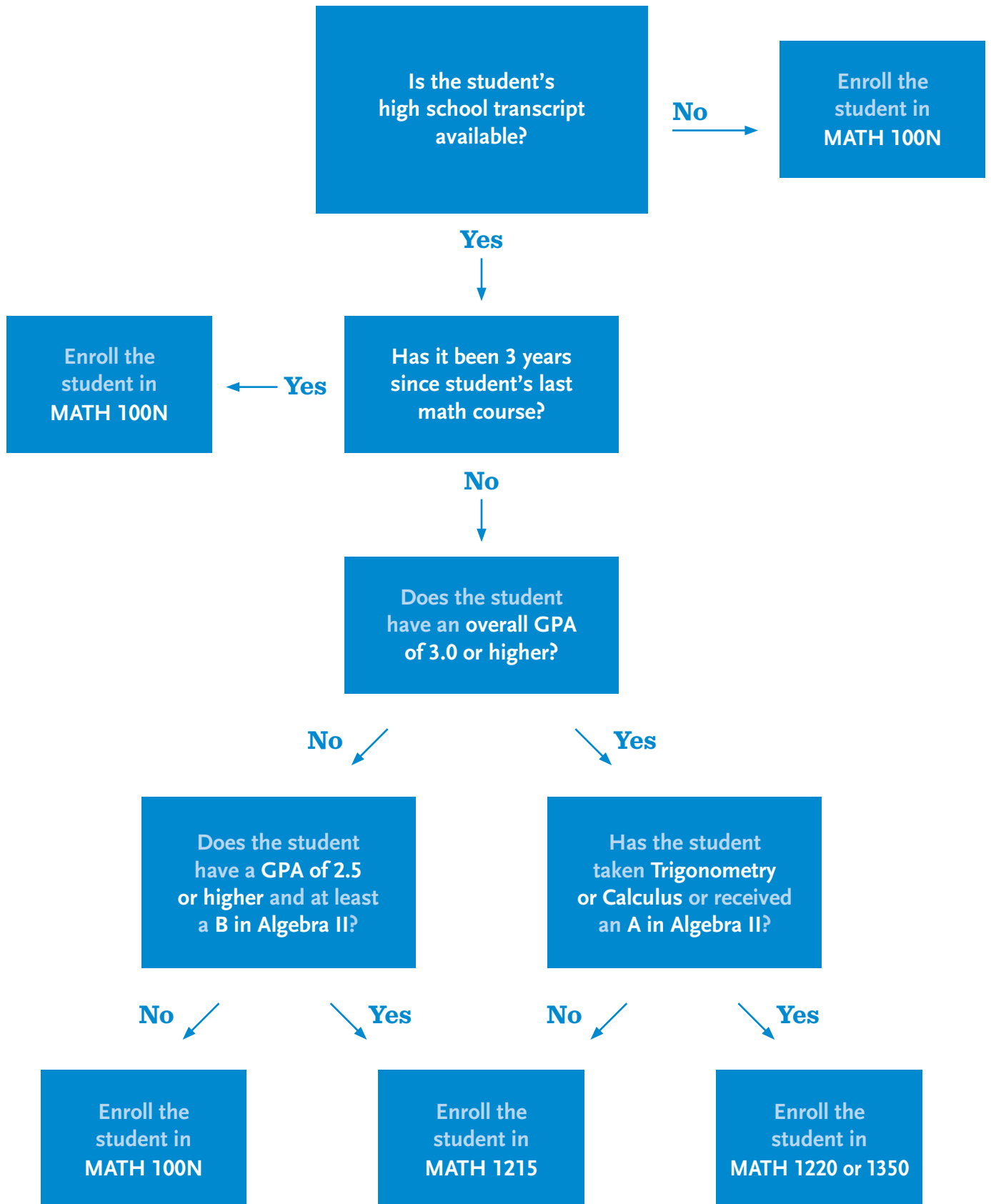


Figure 3 English Placement Flowchart

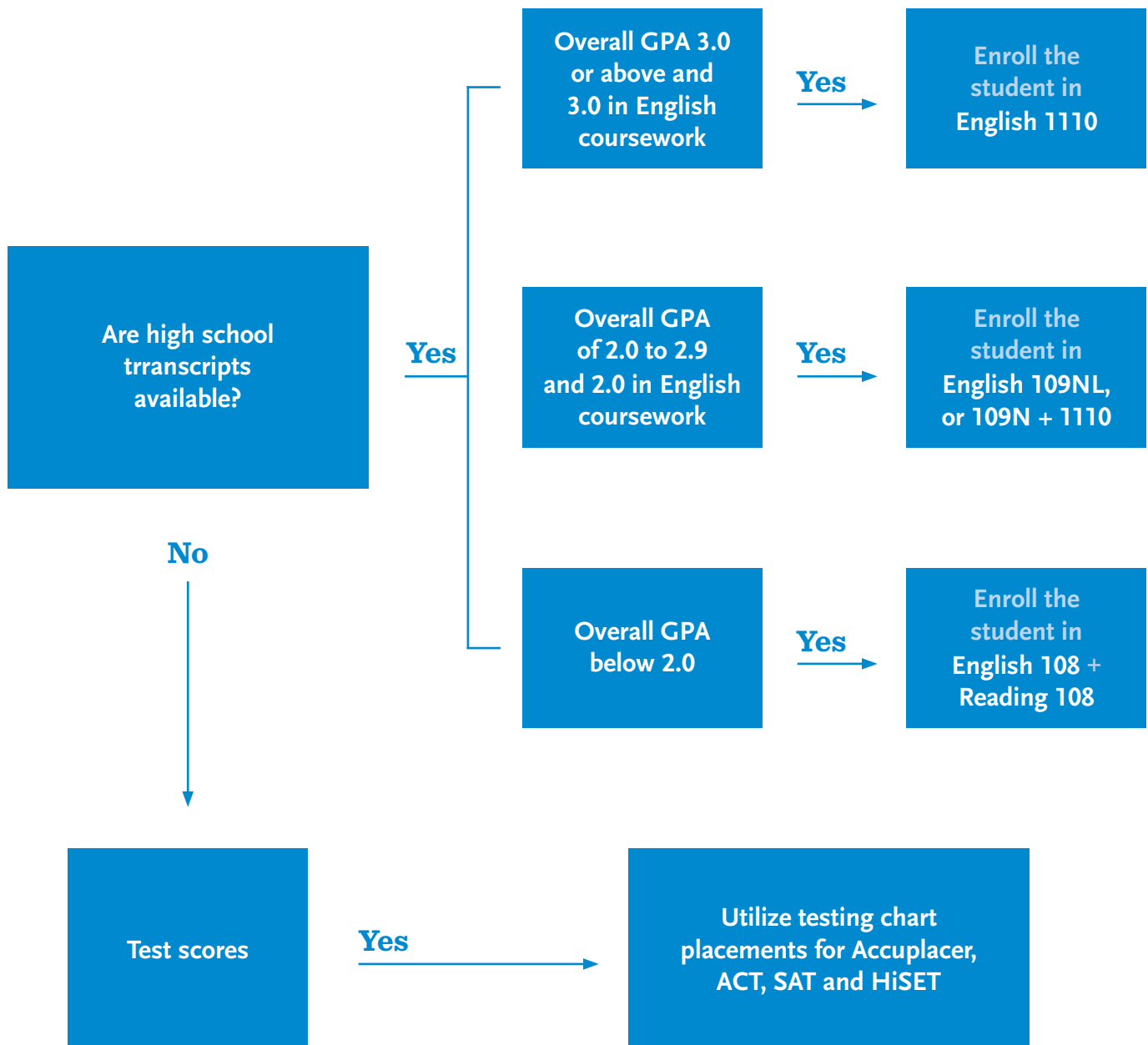


Figure 4 Placement Flowchart Using Exam Scores

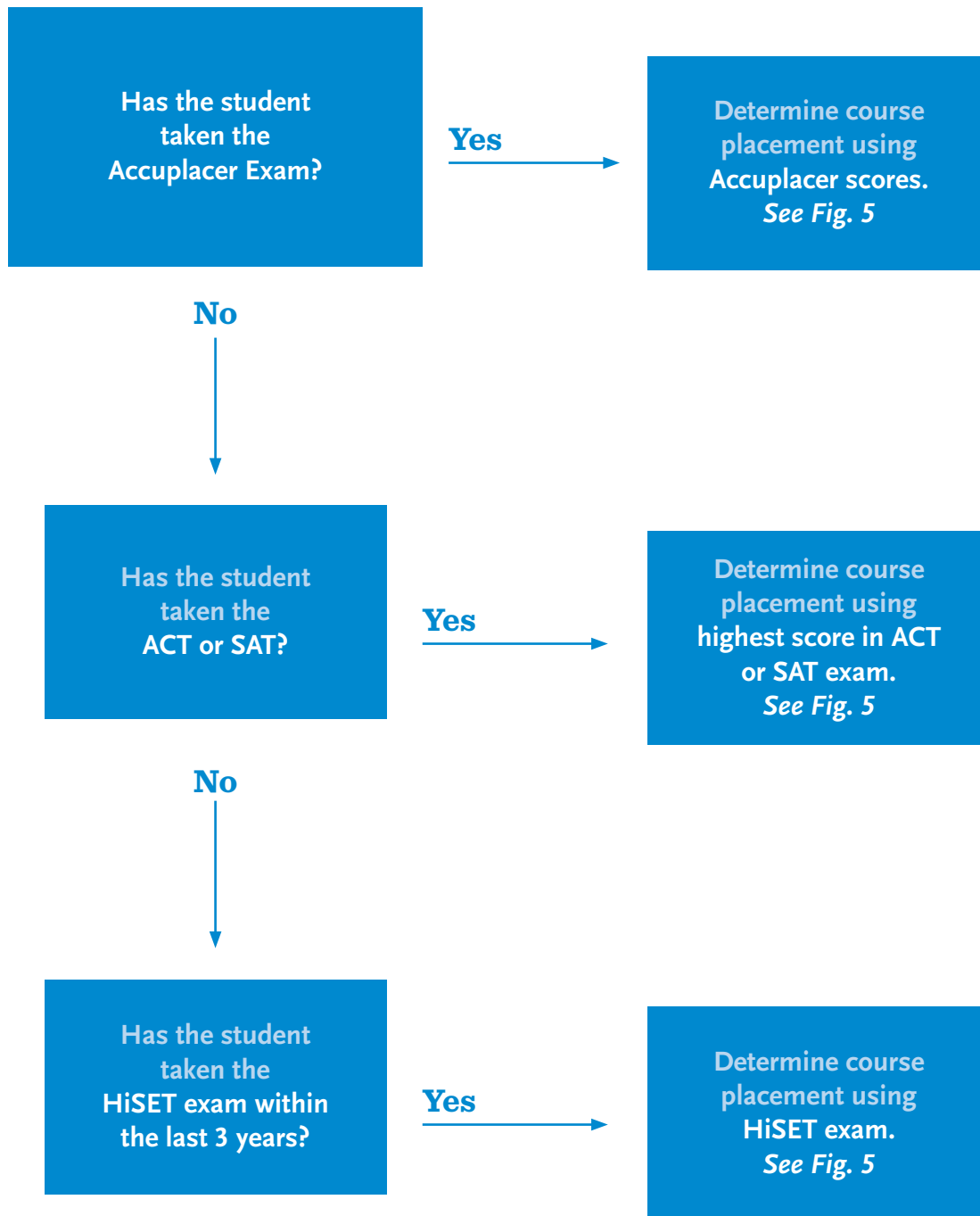


Figure 5 Placement by Exam Table

MATH PLACEMENT

CLASS	NG ARITHMETIC	NG QRAS	NG ADVANCED
MATH 100NL	200 - 242		
MATH 100N	243+		
MATH 1215		253 - 267	
MATH 1220/1350		268+	200 - 236
MATH 1250			237 - 252
MATH 1510			253+

CLASS	ACT	SAT	HiSET
MATH 100 NL	0 - 12	0 - 330	08 - 10
MATH 100 N	13 - 16	340 - 410	11 - 14
MATH 1215	17 - 21	420 - 530	15 - 16
MATH 1220/1350	22 - 24	540 - 590	17+
MATH 1250	25 - 26	600 - 650	
MATH 1510	27 - 36	660 - 800	

ENGLISH PLACEMENT

CLASS	WRITERPLACER	NG WRITING
ENGL 108 + RDNG 108	0 - 3	
ENGL 109NL or ENGL 109N + ENGL 1110	4	
ENGL 109NL or ENGL 109N + ENGL 1110	5	<250
ENGL 1110	5	>250
ENGL 1110	6+	

CLASS	ACT	SAT	HiSET
ENGL 108 + RDNG 108	0 - 13	0 - 350	08 - 10
ENGL 109NL or ENGL 109N + ENGL 1110	14 - 17	360 - 429	11 - 16
ENGL 1110	18+	430+	17+