



State of the Laboratory

Thom Mason

October 23, 2020



COVID-19 response

We turned the challenges of COVID-19 into an opportunity to try new approaches at LANL

- 65% of employees are teleworking
- Staggering shifts, allowing flexible hours, using in-house capability to test onsite employees

LANL plays a leadership role in pandemic innovation

- Our COVID model is used by CDC and New Mexico
- Made \$18M in investments to respond to the virus
- Working with New Mexico DOH to project disease transmission
- Leading the COVID-19 testing team for the DOE's National Virtual Biotechnology Lab
- Supporting FDA and CDC with alternative tests, protocols



LANL researchers developing coronavirus vaccine design

The coronavirus continues to spread throughout the world as researchers and scientists fight to create a vaccine.



Measuring our impact on the economy

\$3B Laboratory funding for FY20

\$1.3B

Est. salaries for LANL employees in FY20

24,169

Jobs LANL directly and indirectly creates in the state

\$440M

Est. FY20 contracts with NM businesses

1,152

Hires in FY20

>\$100M

Est. payment of NMGRT in 2020

41%

Current employees hired from NM

~75%

New hires in the past year who hailed from NM



LANL and Española-based Performance Maintenance Inc. (PMI) sign a 5-year subcontract for janitorial services and supplies. PMI recently won a DOE Small Business of the Year Award for its efforts.

COMMUNITY PRIORITY: Adding value

Almost 90% of employee giving stays with local orgs

- \$2.5M donated in the last employee giving campaign

Recent Triad giving has been COVID-focused

- \$40K for regional foundations, \$10K in emergency grants to Pueblo Relief Fund, \$60K to Food Depot (\$50K from employees, \$10K match), and more

Los Alamos Employees Scholarship Fund awarded \$743,000 in scholarships in 2020

New Community Technical Assistance project will provide bandwidth assistance to Española



Above, students solve math equations as part of the 'Pojoaque Project.' Below, a LANL volunteer donates at a February blood drive.



Partnering for education

New pipeline programs address critical skills for a growing workforce

- Radiation protection degree for 40 students every year (Northern NM College) — have already hired four graduates from this program!
- Engineering machining degree for students who also intern at LANL (Santa Fe Community College)
- Established high school program to prepare seniors for Craft trades with NM Building & Construction Trades (Taos and Questa high schools)
- Mechanical engineering degree (UNM-Los Alamos)

New Mexico is investing \$350K to expand the LANL “Pojoaque Project” to additional school systems

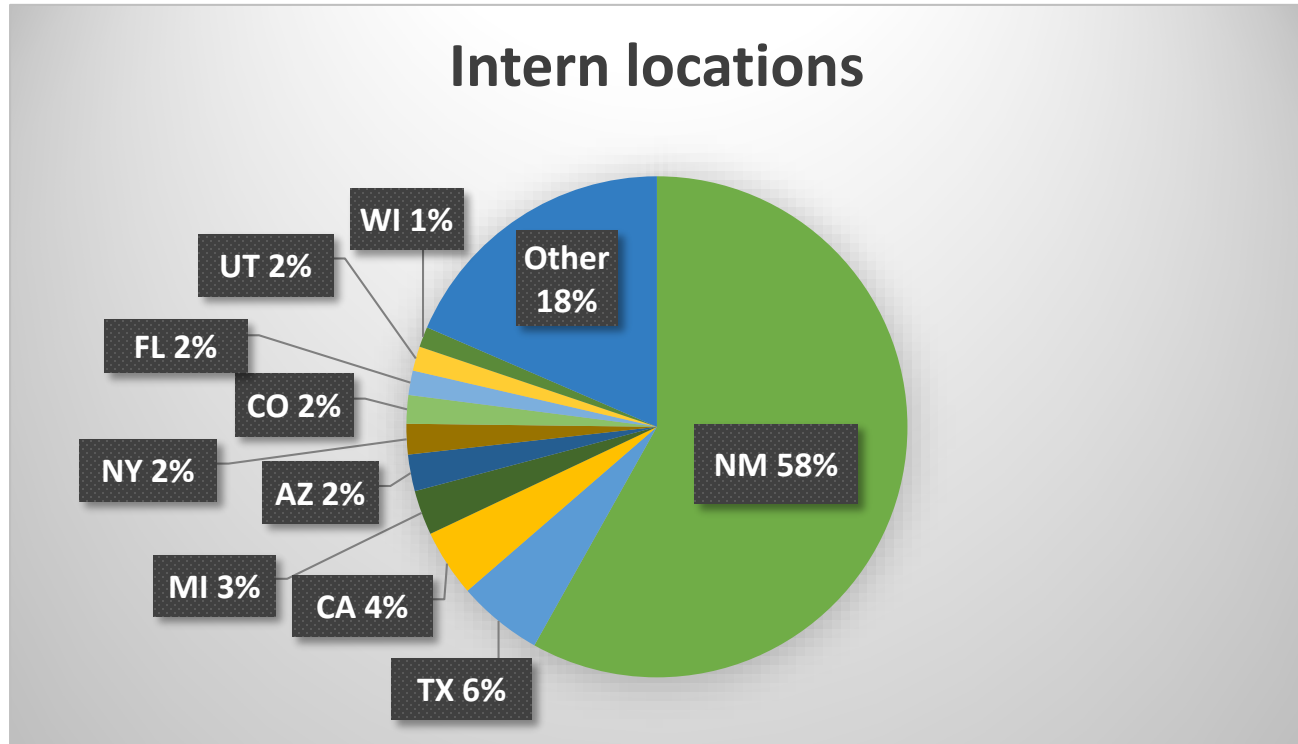


Above, a billboard promotes a collaborative degree program. Below, an SFCC faculty member in the Machining and Tooling Lab.





58% of our summer students worked virtually from NM

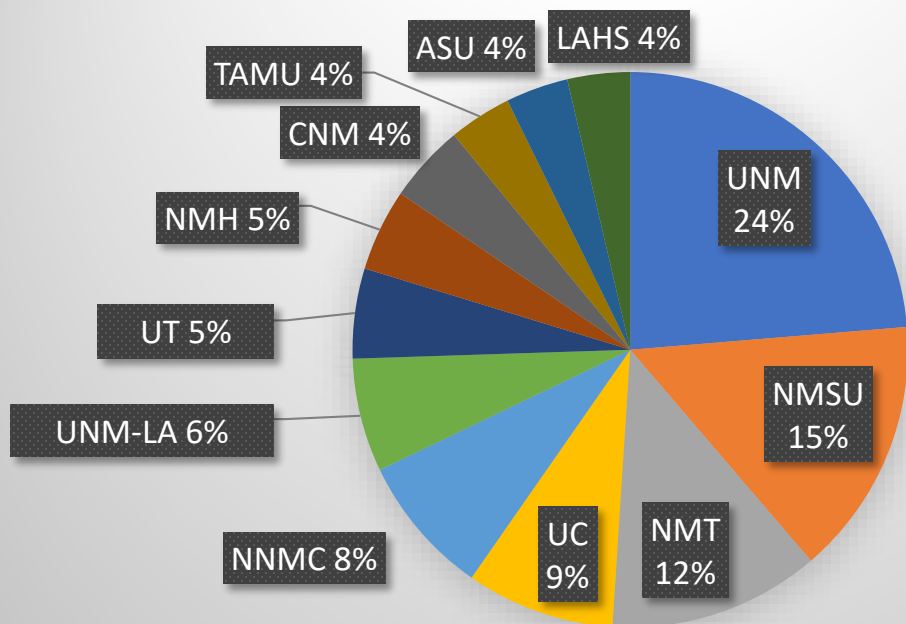


1,154 summer students at peak in 2020

Students also worked from UK, Switzerland, Korea, Mexico, and the Philippines

Student employees are largely studying at NM schools

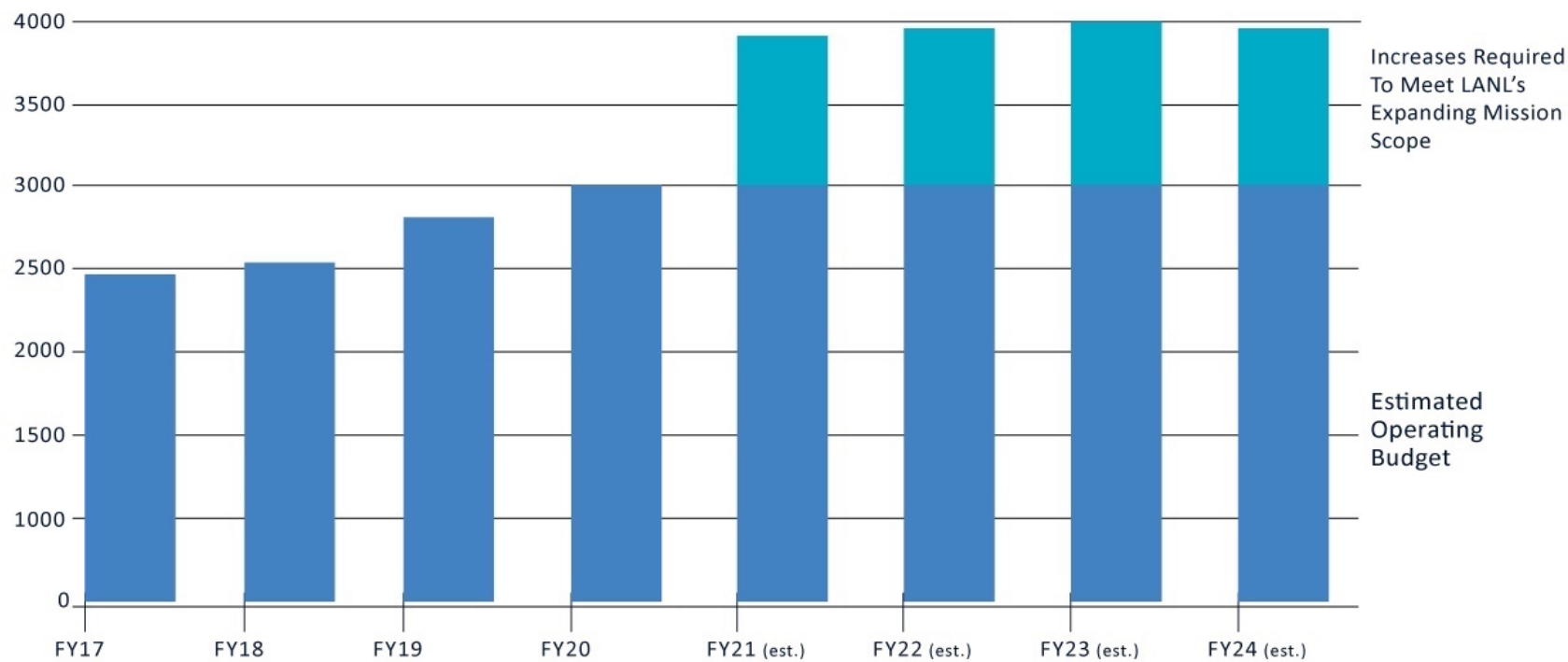
Students by school systems





Preparing for continued growth

FY17-FY24 (est.) in Millions

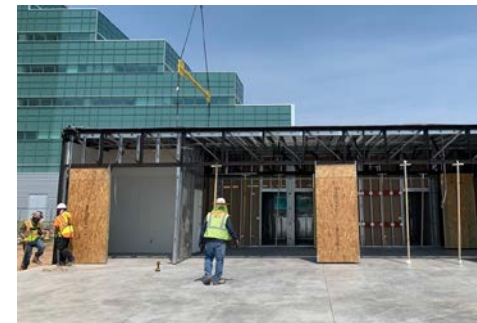


Infrastructure upgrades

- LANL's campus has an immediate problem due to facility conditions and a lack of space
- We are quickly improving facility conditions and creating space for our growing workforce
 - Cell towers
 - Modular office buildings
 - Sensitive compartmented information facility
 - Parking garages
 - Enclosure to conduct year-round experiments
- We are refurbishing some facilities to create collaborative telework hubs
- Some plans are massive in scope and require public and private partnerships



Above, groundbreaking for one of three new cell towers. Below, a crew builds a multi-use office building onsite.





A new approach to construction subcontract management

Making systematic improvements in subcontracts to

- Develop a stable, long-term contracting community
- Increased efficiencies in procurement
- Incentivized contract structures
- Improve safety performance
- Streamlined contract vehicles with pre-agreed terms and conditions

Our new construction execution strategy

- Is aligned to job size and project requirements
- Includes a framework for mentoring small businesses and entities in Northern New Mexico
- Engages existing Triad integrated subcontractors in targeted roles



Short- and long-term opportunities

Scorpius project

- Large-scale, multi-year project to certify stockpile changes in the absence of testing

Multiple award task order contracts

- For maintenance, repair, construction, and design-build services at LANL
- Opportunities range from small construction projects to undertakings in the tens of millions

Glovebox fabrication

Managed Services Provider for staff augmentation



LANL is leading the development of a capability to study what happens to plutonium during a nuclear implosion.

Large capital projects in the pipeline

D&D and facility upgrades

New buildings

- Cafeteria
- Liquid Waste Treatment Facility
- Integrated HE Facility
- Training center
- Offices

Construction in our TA-55 area

- Warehouse(s) to increase storage capacity
- Road modifications for new facilities
- Waste haul road construction
- Water, sewer, power and other utility upgrades



Vision for the future

LANL's missions are enduring

- Deterrence will continue to play a major role
- Our work will be underpinned by innovative science, including the probing and development of materials
- Modeling and supercomputing will be crucial to better understanding and prediction

COVID has defined a new way of getting work done

- This new way of working could cut across generations

The challenges of this pandemic have created an opportunity for us to modernize the site

- We have only just begun improving facilities and executing new construction



QUESTIONS?